



THE GOLF VILLAGE AT ADMIRAL'S COVE

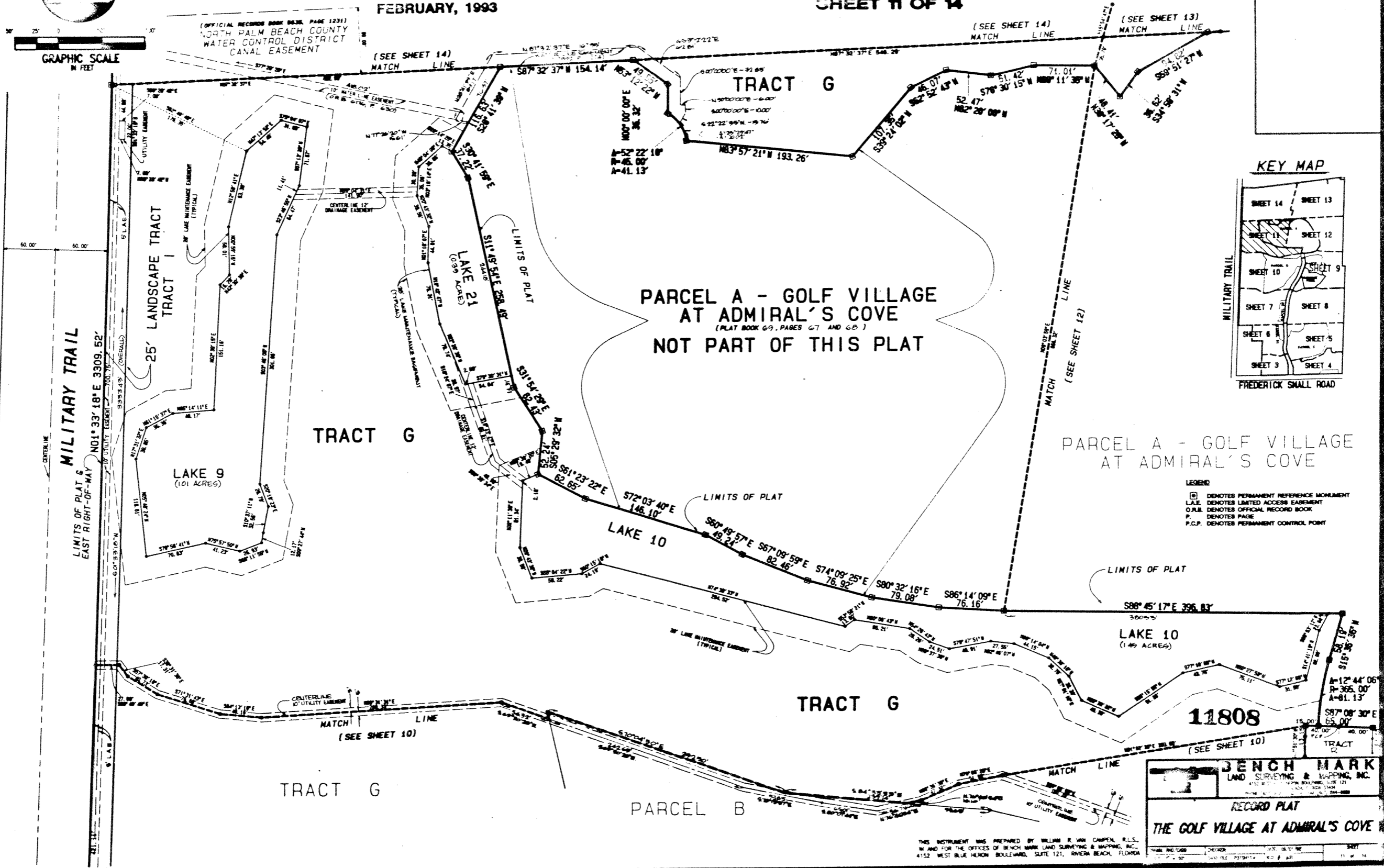
BEING A REPLAT OF A PORTION OF ADMIRAL'S COVE WEST PLAT NO. 1, AS RECORDED IN PLAT BOOK 62, PAGE 19, PUBLIC RECORDS, PALM BEACH COUNTY, FLORIDA, AND LYING IN SECTION 13, TOWNSHIP 41 SOUTH, RANGE 42 EAST, TOWN OF JUPITER, PALM BEACH COUNTY, FLORIDA

FEBRUARY, 1993

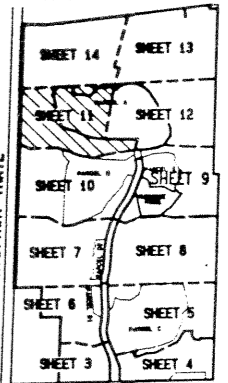
SHEET 11 OF 14

61
70 61

(OFFICIAL RECORDS BOOK 6636, PAGE 1231)
NORTH PALM BEACH COUNTY
WATER CONTROL DISTRICT
CANAL EASEMENT



KEY MAP



FREDERICK SMALL ROAD

PARCEL A - GOLF VILLAGE AT ADMIRAL'S COVE

- LEGEND:
- DENOTES PERMANENT REFERENCE MONUMENT
 - LA.E. DENOTES LIMITED ACCESS EASEMENT
 - O.R.B. DENOTES OFFICIAL RECORD BOOK
 - P. DENOTES PAGE
 - P.C.P. DENOTES PERMANENT CONTROL POINT

BENCH MARK
LAND SURVEYING & MAPPING, INC.
4152 WEST BLUE HERON BOULEVARD, SUITE 121
PALM BEACH, FLORIDA 33411-1121
TEL: 561-845-1121
FAX: 561-845-1122

RECORD PLAT
THE GOLF VILLAGE AT ADMIRAL'S COVE

THIS INSTRUMENT WAS PREPARED BY WILLIAM R. VAN CAMPEN, R.L.S., IN AND FOR THE OFFICES OF BENCH MARK LAND SURVEYING & MAPPING, INC., 4152 WEST BLUE HERON BOULEVARD, SUITE 121, PALM BEACH, FLORIDA